

MODEL: WF500D

SPECIFICATIONS

Voltage.....	120VAC, 60Hz
Incandescent.....	600W
CFL/LED/Electronic self-ballasted.....	2A (150W)
Operating Temperature.....	32°F~104°F (0°C~40°C)
Wire Strip Length.....	16mm (5/8 in.)
Supply Connection.....	14 AWG wires
Screw Torque.....	20 lbf-in
Protocol.....	IEEE 802.11b/g/n
Network Requirements.....	Wireless router supporting 2.4 GHz wireless band Remote Control Devices through 3G, 4G or Wi-Fi
Smart Device Compatibility.....	Android smartphone device running Android 4.1 or above iPhone/iPad running iOS 8 or above CE Smart App 1.0.1 or higher
Certifications.....	UL & C-UL Listed, FCC, IC
Standards.....	Conforms to UL STD UL1472 Certified to CSA STD C22.2 No. 184.1-15 Conforms to IC STD RSS 247 RF, ICES-003(B)

FEATURES

- Perfect replacement for regular wall ON/OFF and dimmer switch, 120VAC
- Manual and remote ON/OFF and dim control of any permanently installed incandescent, halogen, dimmable LED and CFL lamp fixture
- For use with single pole installations.
- Air-gap switch disconnects power from load.

DESCRIPTION

The WF500D dimmer switch is a manual or wireless controlled dimmer switch that replaces a normal household dimmer switch, controlling incandescent, halogen, dimmable LED and CFL bulbs. Sliding air-gap switch disconnects power while replacing light bulbs and prevents leakage of current from fixture(s). The LED dimming performance may vary based upon dimmer type, model, manufacturer, circuit wiring and circuit load.

Lighting selection is up to the user, there are no warranties of performance or compatibility implied or guaranteed.

FCC COMPLIANCE

This device complies with part 15 of the FCC rules and the Industry Canada license-exempt RSS standard(s). Operation is subject to the following two conditions: (1) this device may not cause interference, and (2) this device must accept any interference, including interference that may cause undesired operation of the device. This device complies with RSS-247 of Industry Canada. Operation is subject to the condition that this device does not cause harmful interference.

This equipment complies with Canada radiation exposure limits set forth for an uncontrolled environment. This equipment should be installed and operated with a minimum distance of 20cm between the antenna of this device and your body.



⚠ WARNINGS AND CAUTIONS

Be sure to read the instructions carefully before installation, the manufacturer will not be responsible for any product damage or personal injury.

1. Risk of electric shock. DO NOT use in wet or damp locations.
2. For indoor use only.
3. Risk of fire. DO NOT exceed recommended electrical ratings.
4. TO AVOID FIRE, SHOCK, OR DEATH, TURN OFF POWER at the circuit breaker or fuse and test that the power is off before wiring!
5. Slide air-gap switch to left to completely disconnect power to the load before replacing bulbs.
6. DO NOT use with precision timing devices where inaccurate timing could be dangerous.
7. DO NOT use with devices that should not be operated unattended (heaters, burners, etc.).
8. Check with your local building jurisdiction as to permit, license or code requirements for installing wire or switches within a wall. Some municipalities require an electrical inspection for modification of electrical work. It is recommended that all modifications or alterations of existing or new electrical work to be inspected by a licensed electrical inspector.
9. Install this product to meet applicable National Electrical Code, Canadian Electrical Code and/or State, Provincial, and local building code requirements for installing electrical building wire and switches as a single extension circuit, without modification or alteration to the building electrical circuit/wiring system. Installation code compliance is the responsibility of user and/or installer, and not of the manufacturer or its agents.
10. Manufacturer and distributor are not liable for damages due to improper installation or violation of national electrical or local building code. If you are not skilled with working with electrical systems, you should hire a qualified professional electrician to install this product.

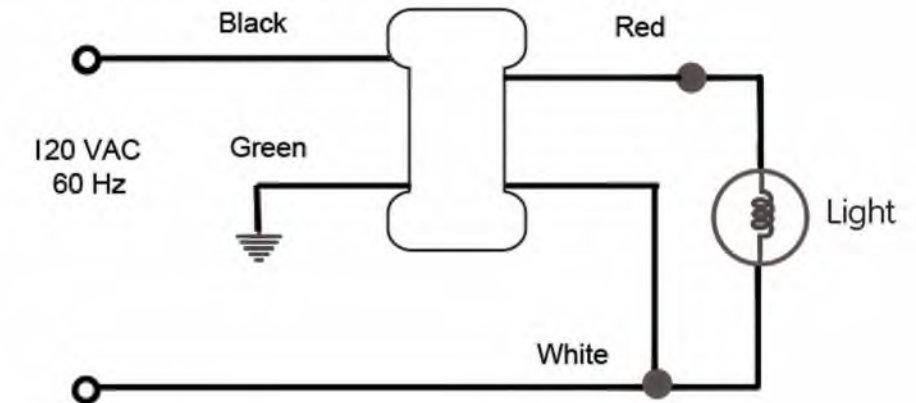
CAUTION – To Reduce The Risk of Overheating and Possible Damage to Other Equipment, Do Not Install to Control a Receptacle, a Motor-Operated Appliance or a Fluorescent Lighting Fixture or a Transformer Supplied Appliance.

ALL CHARGING ESSENTIALS PRODUCTS MUST BE INSTALLED AND USED IN ACCORDANCE WITH THEIR INSTRUCTIONS, INCLUDING INSTRUCTIONS PROVIDED WITH THE CHARGING ESSENTIALS PRODUCT PACKAGING OR PROVIDED ON THE PRODUCT ITSELF. AT THE DISCRETION OF CHARGING ESSENTIALS ANY DEFECTIVE PRODUCT WILL BE REPLACED OR THE PURCHASE PRICE REFUNDED. THIS WARRANTY SHALL IN NO EVENT EXCEED AMOUNTS PAID BY CUSTOMER TO CHARGING ESSENTIALS OR ITS AFFILIATES FOR THE CHARGING ESSENTIAL PRODUCTS INVOLVED, AND EXPRESSLY EXCLUDES COVERAGE OF ANY DAMAGE TO FIXTURES, LAMPS OR THIRD PARTY PRODUCTS OR ELECTRONICS.

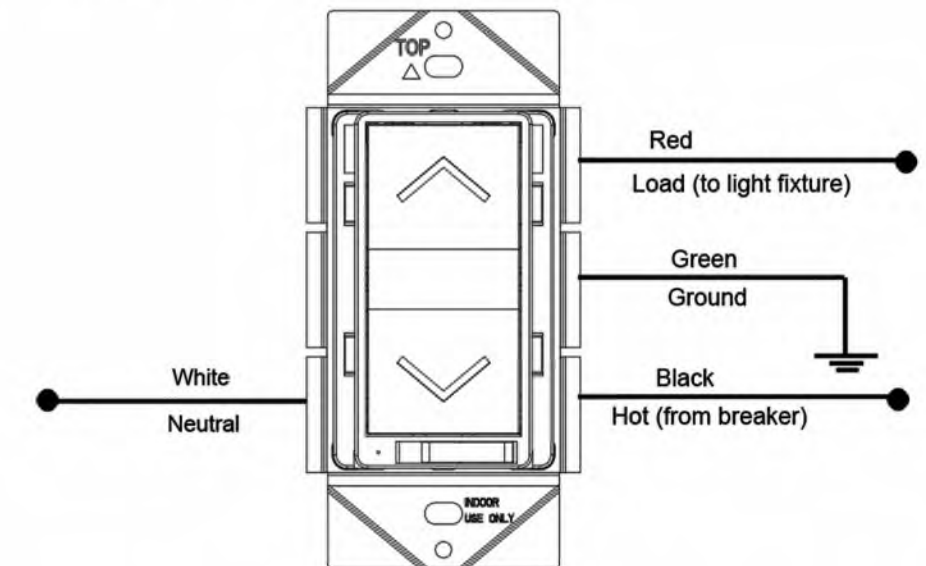
INSTALLATION

This WF500D dimmer switch may be used in new installations or replace an existing wall switch.

Typical Dimmer Wiring Schematic:



Wiring Diagram:



1. **WARNING:** High voltage - To avoid fire, shock, or death, turn power off at circuit breaker or fuse and test that power is off at the switch before wiring.
2. Remove wall plate and existing switch mounting screws.
3. Carefully remove the existing switch from the switch box.
4. Disconnect the wiring from the existing switch.
5. Connect the dimmer switch as shown in the wiring diagram: Black wire to hot wire, white wire to neutral wire, red wire to load wire, green wire to ground wire.
6. Check connections to be sure they are tight and no bare conductors are exposed.
7. Insert the WF500D dimmer switch into the standard outlet box carefully.
8. Secure the WF500D dimmer switch to the box using the supplied screws.
9. Attach the wall plate.
10. Restore power at the circuit breaker and test the system.

INSTALLATION INSTRUCTIONS

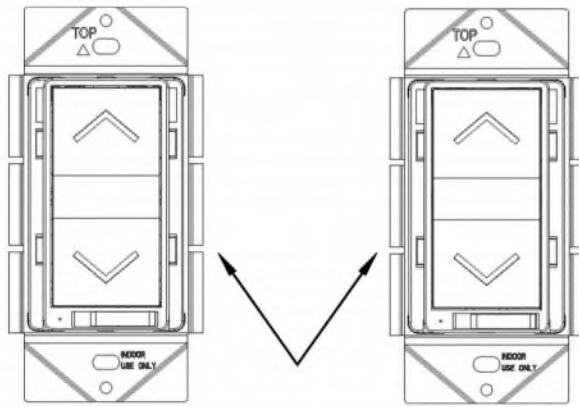
Air Gap Switch

During normal operation, there is a small amount of power passing through the switch to the load even when the dimmer switch is turned off. The WF500D has an air-gap switch on the lower right side to completely disconnect power to the load.

Slide the air-gap switch left to disconnect the power while replacing light bulbs and slide right for normal operation. The air-gap switch must be all the way to the right for the dimmer to function and control the lighting.

MULTI-GANG INSTALLATION

When installing more than one control in the same wall box, it may be necessary to remove the side tabs before installing (see below). Using pliers, bend each tab back and forth until they break off. Repeat for each tab to be removed. Removal of tabs WILL REDUCE MAXIMUM LOAD CAPACITY.



Tabs removed for multi-gang installation

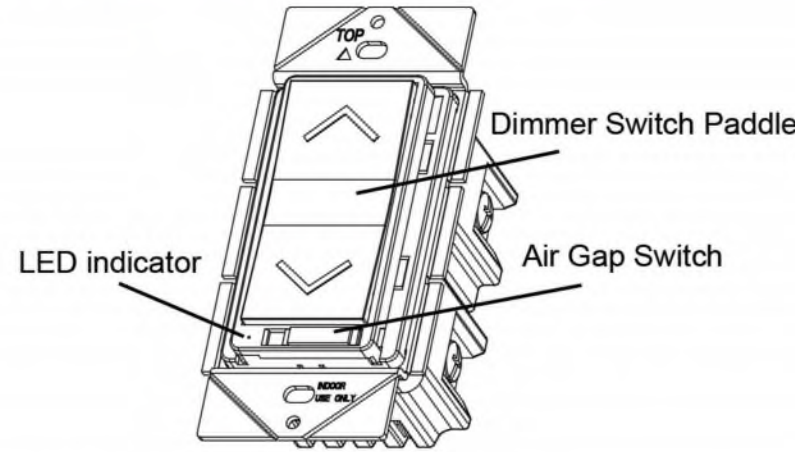
LED/CFL Derating Chart			
Load Capacity when Tabs are removed from:			
Dimmable LED/CFL	0 Sides	1 Side	2 Sides
		150W	150W

When using the dimmer to control LED/CFL lights in conjunction with another dimmer to control incandescent/halogen lights, follow this derating chart for maximum capacity on EACH device.

If the combined wattage of ALL LED/CFL bulbs on 1 dimmer is:	Then the maximum COMBINED wattage for the Incandescent/Halogen bulbs on EACH attached dimmer:		
	If NO Tabs are removed then Max Wattage is:	If 1 side of Tabs is removed then Max Wattage is:	If 2 sides of Tabs are removed then Max Wattage is:
0W	600W	500W	400W
1-25W	500W	400W	300W
26-50W	400W	300W	200W
51-75W	300W	200W	100W
76-100W	200W	100W	50W
101-125W	100W	50W	0W
126-150W	0W	0W	0W

If you are using ONLY LED/CFL bulbs on ALL dimmers, DO NOT USE this derating chart. Follow the LED/CFL derating chart.

OPERATION



Manual Control

The WF500D dimmer switch allows the user to: Turn ON/OFF and control the brightness level of the connected lighting.

- To turn the connected lighting ON: Tap the top of the dimmer switch paddle. The LED indicator will turn on in blue.
- To turn the connected lighting OFF: Tap the bottom of the dimmer switch paddle again. The LED indicator will turn off.
- To brighten the connected lighting: Press and hold the top of the dimmer switch paddle, release when desired level is achieved.
- To dim the connected lighting: Press and hold the bottom of the dimmer switch paddle, release when desired level is achieved.

Please note: pressing and holding the dimmer switch paddle until the light intensity is at the minimum setting does not turn the power OFF, you must still tap (short press) the bottom of the dimmer switch paddle to turn the power OFF.

Remote Control

After you have successfully set up the CE Smart app and your dimmer light switches, you may control them remotely from your mobile device using a Wi-Fi or cellular connection. Compatible with Amazon Alexa and Google Home.

Quick Start for CE Smart App

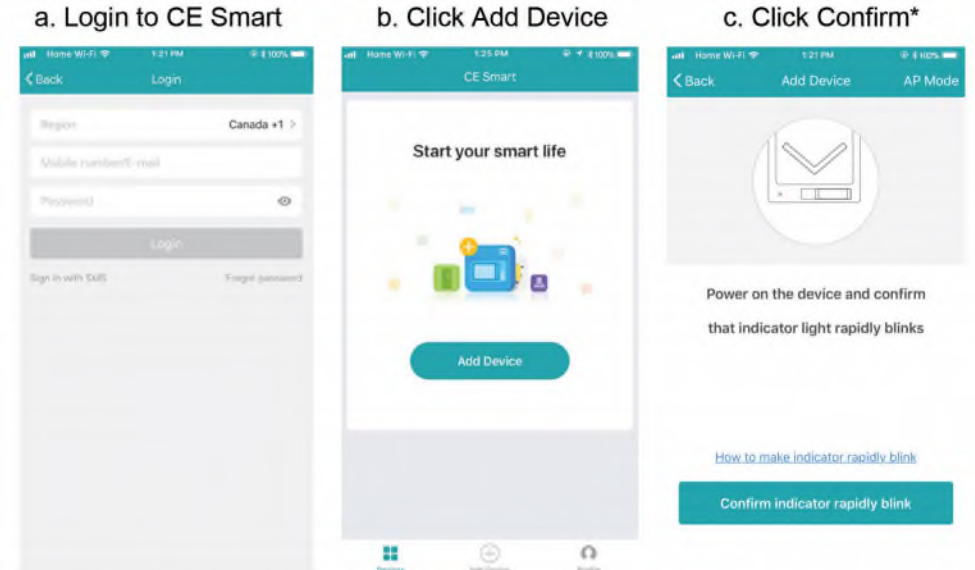
- Use your phone to scan the QR code below or search for "CE Smart" in the App Store or Google Play to download and install the app. For iPad's select "iPhone Only" option in the App Store to locate CE Smart app.



- Connect mobile device to your 2.4GHz Wi-Fi network. Please note this Smart dimmer switch can only be connected to 2.4GHz network.

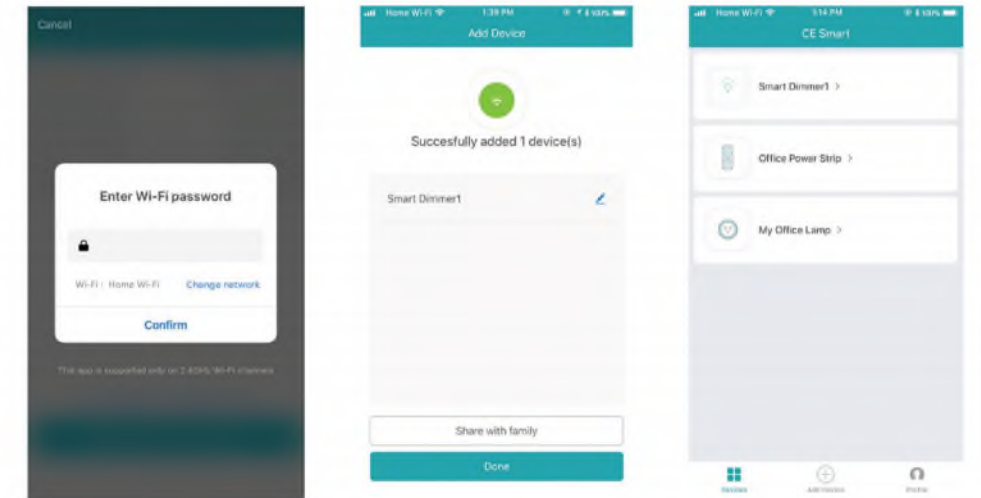


- Launch CE Smart and follow the in-app instructions to connect the Smart dimmer switch to your network.

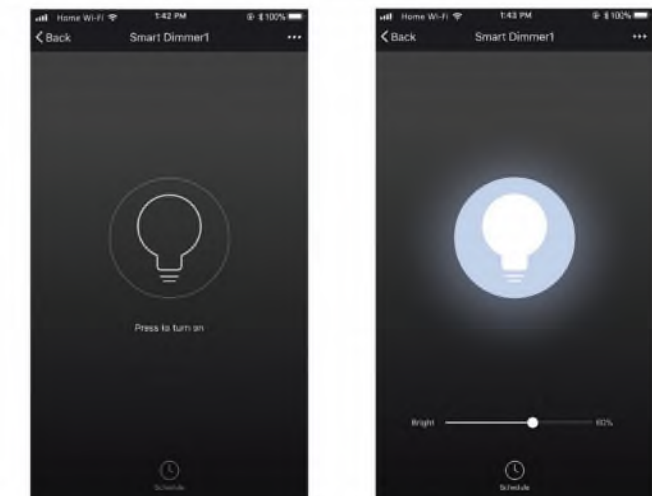


- Login to CE Smart
- Click Add Device
- Click Confirm*

- Enter Wi-Fi Password
- Edit Name, Share or Done
- Device Home Screen



- When the device is added successfully, this Wi-Fi dimmer can be turned ON/OFF and dimmed.



Please Note:

1. During the process of adding a device, you must select the correct Wi-Fi router (step d.) name and fill in the correct Wi-Fi password. Otherwise, the device will not add successfully.
2. This Wi-Fi dimmer is now paired with one phone/tablet device. If you want to share control of the Wi-Fi dimmer with additional people, click Profile and select Device Sharing. Click Add. Turn on device sharing and tap Share with new member.

LED INDICATOR LIGHT ON SWITCH

Quick Flashing in Green: Connecting to the network.

Slow Flashing in Green: AP mode.

Green Light Off: Connected to the network.

Solid Green: Failed to connect to network.

Solid Blue: The Wi-Fi dimmer is switched on.

Blue Light Off: The Wi-Fi dimmer is switched off.

CE SMART APP REFERENCE GUIDE

Register / Create an Account

Tap "Register" to create an account using your email address or mobile phone number. Optionally you may tap "Sign in" with SMS to create a temporary account using your mobile phone number.

- Tap Register to enter registration page.
- The system automatically recognizes your region (country/code). You may also follow the instructions to manually select your country code. Enter your email address or mobile number (do not include dashes, spaces, or the +1, only use 10 digit number for Login.) and tap Login.
- If you enter your mobile number, you will get a verification code via text message. Enter the verification code, create a password, and tap "Confirm" to finish your registration.
- If you enter your email, create a password and tap "Confirm" to finish your registration.

Login / Registered Account

- Tap "Login" to sign in to your account.
- Enter your previously registered email address or mobile number and password, and then tap "Login."

Login / Temporary Account / Sign in with SMS

- Tap "Sign in with SMS" if you want to create a temporary login. Note: there is no password and your login account will not be saved.
- Enter your 10 digit mobile number (no dashes or spaces) and tap "Get". You will receive a verification code via text message.
- Enter the verification code and tap "Login."

Forgot Password

- To reset password, tap "Forgot password."
- Enter your email address or mobile number and tap "Next."
- Enter the verification code received via text or email, then enter a new password, tap "Confirm" to finish.

Add Device + Normal Mode (Default Method)

- Enter the app, tap "+ Add Device" in the centre bottom of the page to enter device connection page. Select your device type.
- There are two Wi-Fi network connection methods (Normal Mode and AP Mode.) Normal Mode is the default and connects via your 2.4GHz Wi-Fi channel only. (Does not work with 5GHz channel.) Normal Mode allows you to connect several CE Smart devices at the same time.
- For Normal Mode, please make sure the indicator light is set to flashing rapidly (2 times per second).

- Tap "Confirm indicator rapidly blink."
- Enter your 2.4GHz Wi-Fi password and tap "Confirm" to enter the device connection process.
- Device connection process will begin and connect device.
- Tap Done.

AP Mode (Access Point)

- Tap "AP Mode" in upper right screen.
- Connect your phone to 2.4GHz Wi-Fi.
- In AP mode your device broadcasts a device name in your phone's Wi-Fi settings that allows the Wi-Fi device to connect to your network. AP mode allows you to connect devices one by one.
- Make sure the device's indicator light is slowly flashing (1 time every 3 seconds).
- Tap "Confirm indicator slowly blink."
- Enter your 2.4GHz Wi-Fi password and tap "Confirm."
- Open Wi-Fi settings to connect to device's access point Wi-Fi name.
- Locate, then tap the Wi-Fi device name, i.e. SmartLife_XXXX.
- Tap Connect.
- Go back to CE Smart app.
- Device connection process will begin and connect device.
- Tap Done.

Network Connection Process

The app goes through the process of trying to Connect Device, and displays a percentage on the Connecting Now screen while connecting. When the percentage reaches 100% the device should be successfully connected and registered to the cloud. The device default name will appear on the screen. You may rename the device by tapping the pencil icon to edit. This allows you to change to a better description of what the dimmer is controlling, for example, "Living Room Lamp." Tap "Done" or "Share with Family" to finish setup.

Troubleshooting Adding Device Failed

If your app interface failed to connect your dimmer switch to your mobile device, it means that the network connection failed. Make sure you are connected to a 2.4GHz Wi-Fi channel, you entered the correct Wi-Fi password, and the light on the dimmer switch is quickly flashing. Try connecting again or view help in the app.

Controlling Devices

After successful configuration, the connected devices will be displayed on the home screen. Tap the device name to enter its control page.

Access to the control buttons is located in the upper right corner of the screen "... " in addition to Switch, Countdown and Timer on main screen. Note: When device is offline or no longer connected, "Offline" will appear under the device name. Tap "+ Add Device" and follow the on-screen instructions to reconnect the device.

Device Control Centre Features

- Switch: Switch the outlet on and off remotely using Wi-Fi or cellular connection.
- Timer: Set on and off schedules for each device. On and off schedules must be set up individually. Make sure to set an off schedule for every on schedule.
- **Daylight Savings:** Timer schedule needs to be adjusted when switching between standard time and daylight savings time.

Device Settings

To control your devices Tap "... " in upper right corner of device control screen.

- **Modify Device Name**> Set a custom name for your device.
- **Check the Network**> Check your network connection.
- **Use Amazon Echo**> Follow the on-screen instructions for how to

set up Amazon Alexa voice control of your devices with the Amazon Alexa app and an Amazon Echo device.

- **Use Google Home**> Follow the on-screen instructions for how to set up Google Assistant voice control of your devices with the Google Home app and a Google Home device.
- **Device Sharing**> Tap "Add" to share the device with family members; they must have registered CE Smart app login name.
- **Device Info**> Displays your Device ID, IP address and Mac address.
- **Create Group**> Create a group to control multiple devices simultaneously. A list of available devices to group will be displayed. Only identical devices with the same model number may be grouped.
- **Send Feedback**> Send feedback to the manufacturer.
- **Check for Firmware Update**> Display the latest version.
- **Remove Device**> Remove the device from the app. Note: this won't delete the customized device information; previously connected device information is stored.
- **Restore Manufacturer Defaults**> Delete the stored device information completely.

Profile

Tap "Profile" located at bottom of home screen.

Tap to set your name> Below are options available for set-up:

Add Profile Picture, Nickname, Phone Number, Account Location, Temperature Unit, Time Zone, Change Login Password, Pattern Unlock, Logout

Device Sharing> Users sharing your device.

Message Centre> Messages related to the app.

Integration> Display list of supported devices and set up instructions for Amazon Echo and Google Home Devices.

Scan QR Code> QR code scanner

FAQ> Tap to view list of frequently asked questions

Feedback> Display feedback messages sent or send new feedback message.

About> Current app version. Rate Us: submit rating and/or review.

Settings> Turn on/off Sound, Vibrate, and Push Notifications, Clear Cache.

Restoring Factory Defaults

Press the top or bottom button 5 times continuously, then press and hold the sixth time for 5-8 seconds, release and wait until the green LED indicator turns on and flashes quickly. This may take a few seconds.

Not all Wi-Fi installations are the same. If you are having trouble getting the light to fast blinking when setting up your device on your Wi-Fi, do not give up. Try these steps several times repeatedly until you get the light to fast blinking.

Please note: When power is reconnected after an interruption, the green LED indicator will flash quickly, which means that the dimmer is searching for Wi-Fi. It will stop flashing and turn off when Wi-Fi has connected successfully for 5 seconds.

Made in China

All trade names are registered trademarks of respective manufacturers listed. iOS is a trademark or registered trademark of Cisco in the U.S. and other countries. Apple, the Apple logo, iPad, iPhone, and iPad touch are trademarks of Apple Inc., registered in the U.S. and other countries. App store is a service mark of Apple Inc., registered in the U.S. and other countries. Android is a trademark of Google LLC. Google Play, the Google Play logo, Google Assistant and the Google Assistant logo are trademarks of Google LLC. Amazon, Alexa and all related logos are trademarks of Amazon.com, Inc. or its affiliates. Wi-Fi[®] is a registered trademark of Wi-Fi Alliance[®].